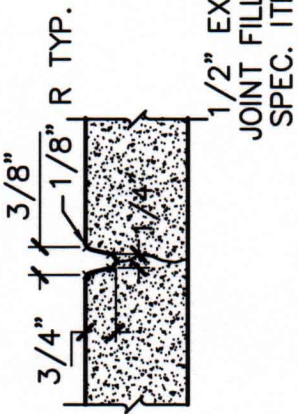
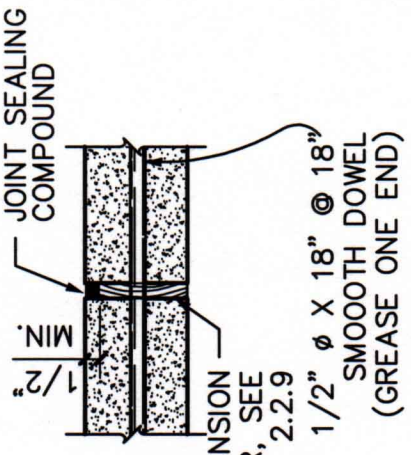


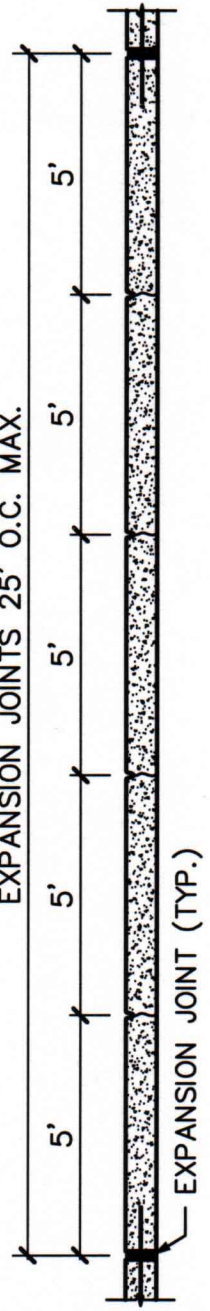
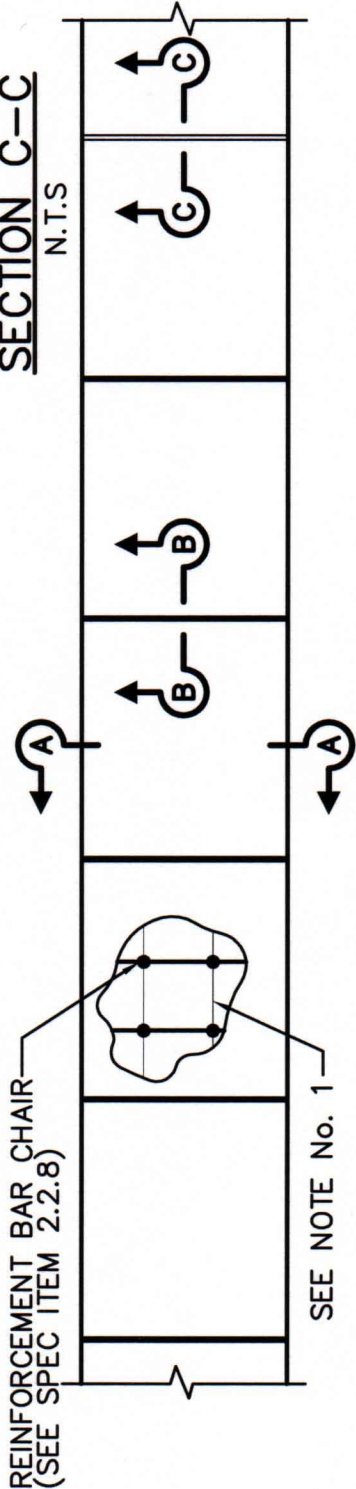
SECTION A-A
N.T.S



SECTION B-B
N.T.S



SECTION C-C
N.T.S



- NOTE:**
1. REINFORCEMENT TO BE #3 BARS AT 18" C-C OR WELDED WIRE FABRIC 6X6 - W4.0 X W4.0
 2. DOWEL WITH #4 BARS AT 18" C-C WHEN CONNECTING TO EXISTING SIDEWALKS, DRIVEWAYS, CURBS AND GUTTER.
 3. INSTALL 1/2" ϕ X 18" SMOOTH DOWELS @ 18" (GREASE ONE END) THROUGH EXPANSION JOINTS.
 4. CONCRETE FOR SIDEWALKS SHALL BE MINIMUM 3,600 PSI @ 28 DAYS.



**CITY OF
DECATUR**

PAVING CONSTRUCTION DETAILS
CONCRETE SIDEWALK

REVISED OCT 2001
SCALE: N.T.S.
SHEET: **P-9**